

# OS WORKSTATION

The *Lixi LF-85-5XX-OS* workstation series utilizes real-time x-ray to provide a cost effective solution for a variety of inspection needs. Lixi's system features a mobile cabinet for ultimate portability within your facility, while providing the operator with a high degree of safety. Simple image processing software is available, allowing the user to pre and post process, capture, archive and retrieve images. Whether used for manufacturing process validation or for ad-hoc inspection of components and assemblies, the Lixi workstation series is a productivity tool which will find everyday use.

This system is the ideal choice for manufacturers to introduce x-ray imaging technology into their processes. Ease-of-use, safety, portability, and reliability have all been designed and built into the unit. Product design benefits from improved analysis of assembled components. Manufacturing processes can be monitored and fine-tuned. Your failure analysis techniques will be extended through the use of x-ray for non-destructive testing. Lixi offers an x-ray imaging solution which won't break the bank and won't take over your plant.

## FEATURES:

- 22 to 50kV x-ray source
- 50 micron focal spot
- 10W maximum power
- Analog kV & mA control with digital displays
- Computer based image processing
- 15" LCD monitor
- 25mm and 50mm field of view
- 10 to 12 lp/mm resolution at 1:1
- Manual sample manipulation
- 10" x 12" scan area
- Fully shielded & interlocked inspection cabinet
- Stainless steel inspection table
- System dimensions: 30"D x 30"W x 35"H



## PRODUCT OVERVIEW



**EXAMPLE PARTS THAT CAN BE IMAGED:**

- Electro-mechanical assemblies
- Wire harnesses
- Circuit boards
- Linkages
- Medical devices

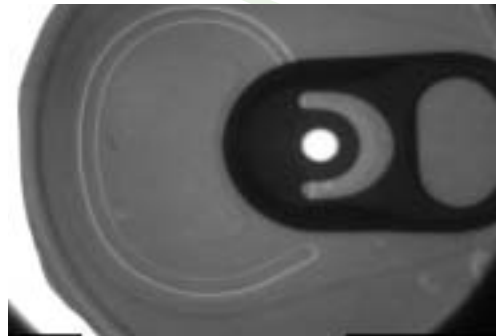
Post assembly inspection of a syringe reveals a bent needle.



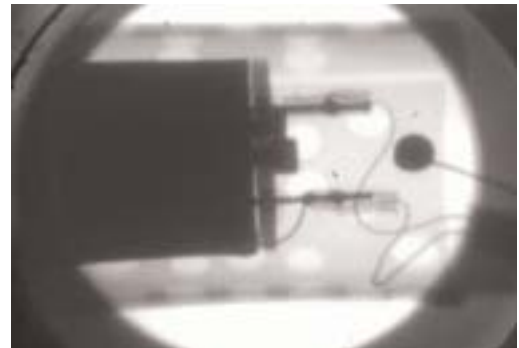
**APPLICATIONS:**

- Engineering support
- Process control
- Failure analysis
- Product design
- Non-destructive testing

Confirming the integrity of the seal on a can top.



Connections within a light bulb.



Electro-mechanical component used in an airplane.



Lixi's 'pizza paddle' allows the operator to position parts quickly, easily and accurately.



Lixi, Inc. 11980 Oak Creek Parkway, Huntley IL 60142  
P 847 961 6666 F 847 961 6667  
[www.lixi.com](http://www.lixi.com)